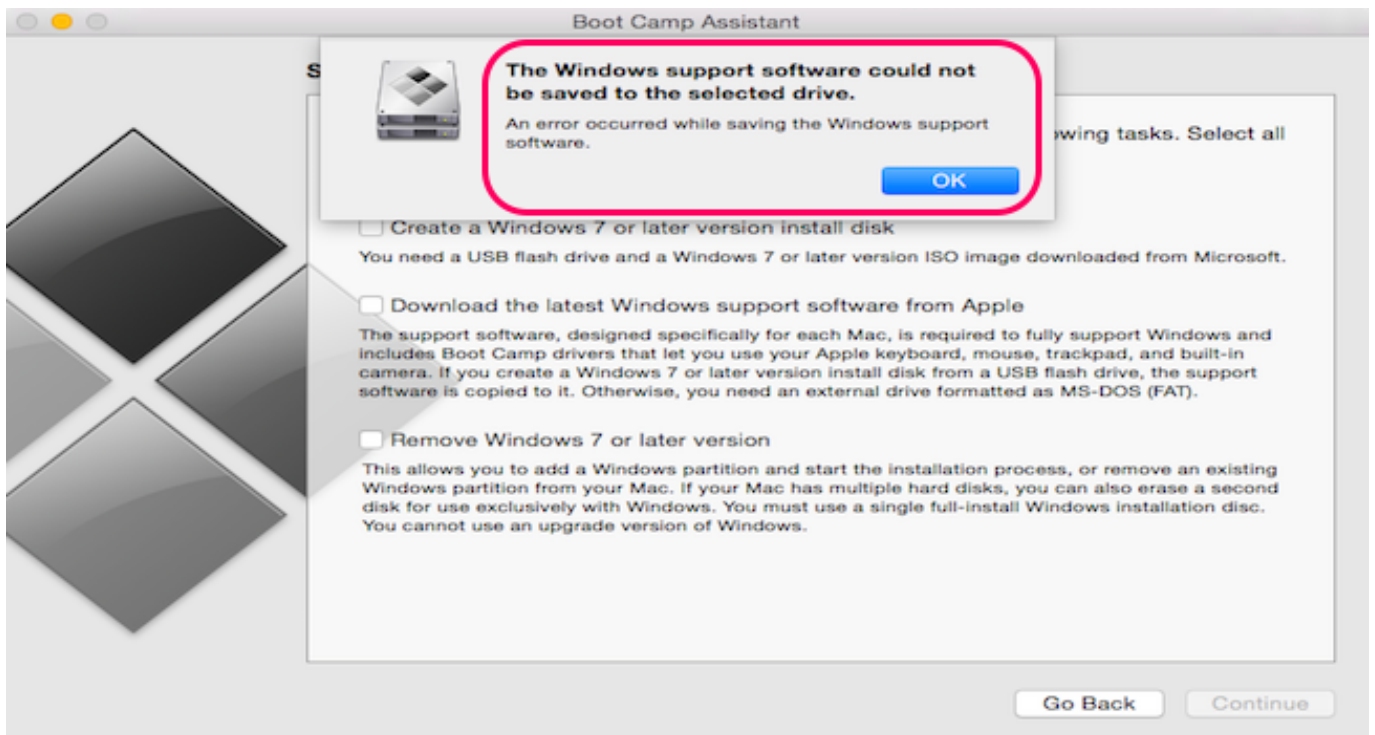

DOWNLOAD

[Mac Will Not Allow Me To Partition For Boot Camp](#)



[Mac Will Not Allow Me To Partition For Boot Camp](#)

DOWNLOAD

How to Resize Bootcamp Partition As we know, if you want to resize Mac partition, you can directly turn to the Disk Utility tool, located in /Applications/Utilities.. With this tool, you can grow or shrink HFS+ (Mac OS X) partitions on the fly, with the resizing done live regardless of whether the drive is internal or an external drive, or even the boot volume.

The utility also installs a Windows Control Panel applet for selecting the boot operating system.. In general, when it comes to talking about resizing Bootcamp partition, these following questions would be asked: what is Bootcamp partition, when need to change Bootcamp partition size, how to increase/ decrease Bootcamp partition effectively.. Quick Navigation :Overview of Bootcamp Partition A reader had a Windows issue, and didn't know how to solve it.

However, after running Windows, you may find that your Bootcamp partition is running out of space, and you need to increase its size to continue running Windows OS.. Now, the question is: "How to change the size of Bootcamp partition to meet the needs of Windows?" Well today, I'm going to make it easy for you.

I have a mac and had Windows 10 activated on a Parallels partition I now want to transfer Windows 10 to the Boot Camp partition.. I have Windows 7 installed in boot camp on my 2010 Mac Pro I'm trying to boot back into OS X and cannot seem to boot back.. Of course, this NTFS partition is called Bootcamp partition which is used to install Windows.

Next, let's answer these problems in detail What Is Bootcamp Boot Camp Assistant is a multi-boot utility included with Apple Inc.. However, activation will not allow me to reactivate the digital license into the Boot Camp partition.. However, do you know why we have to make a new partition to install Windows? Well, the reason is that Windows and Mac don't run in the same format.. This means that you can run Windows OS on NTFS and run Mac on Mac OS X (Journaled) on the same hard drive.. However, recently I'm quickly running out of space on my Bootcamp partition How can I expand the size of the Boot Camp partition? Have you ever run into the same problem? Do you know how to effectively resize Bootcamp partition? Do you know how to change the size of Bootcamp partition without data loss? Do you know whether there are free yet professional tools to help to extend or shrink Bootcamp partition? Now, if you haven't found a suitable solution, you could read this post to find answers. d70b09c2d4

<http://bonsberszebrtu.tk/melvwell/100/1/index.html/>

<http://lardinglu.tk/melvwell68/100/1/index.html/>

<http://vicbursdingro.tk/melvwell46/100/1/index.html/>